

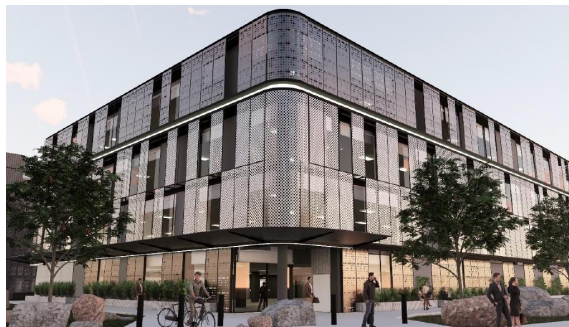
## SA BUSINESS


# First look at plans for SA's new emergency services headquarters

The state's new emergency services headquarters at Keswick will cost \$43 million to develop, featuring a four-storey office complex, six-level carpark and storage for the CFS's heavy tankers and bulk water carrier.

Michelle Etheridge, Business Reporter, The Messenger

 Subscriber only | March 10, 2020 8:00pm



 An artist's impression of the new emergency services headquarters planned for Richmond Rd, Keswick, to be developed by Axiom.

The new emergency services headquarters at Keswick will come with a \$43 million price tag, providing a base for more than 300 staff.

Property developer Axiom will lead the project at the Keswick Terminal on Richmond Rd, building a four-storey office complex, six-level carpark and storage building to host the CFS's heavy tankers and bulk water carrier, and the SES's marine operations training boat. The State Government has committed \$14 million on fitting out the complex, to be a base for the SES, CFS, MFS and SAFECOM (South Australian Fire and Emergency Services Commission).

A report by MasterPlan showed Rhumb Consulting reviewed 20 potential sites to find the best spot for the new emergency services headquarters, before the Government settled on the spot about 350m west of the Keswick rail terminal.

"The office component is intended to accommodate the executive and senior management teams of the SES, CFS, MFS and SAFECOM who will be co-located in a common headquarters along with more than 300 other employees as well as volunteers," the report says.

It is expected to provide a disaster resilient and accessible headquarters for the services.

A Government spokeswoman said it would lease the property – also to become the headquarters for a central State Command and Control Centre – from Axiom on a long-term basis.

## MORE NEWS

[Water park, holiday village planned for Mannum to boost river-based tourism](#)

[Hundreds of houses proposed for tiny Fleurieu town](#)

She said plans were on track for staff to move into the new site in November 2021.

About 185 people will find work building the complex, forming part of the Worldpark01 office precinct, which was approved in 2009.

Only one of the three office buildings planned at the site has been completed.

The State Commission Assessment Panel will decide whether to approve the plans, which are out for public consultation until Wednesday, March 18.

[michelle.etheridge@news.com.au](mailto:michelle.etheridge@news.com.au)